



Newsletter

Week Ending 8th May 2026



What's been happening in our school...?

This week I would like to focus on our Year 6 children.

They are a really special year group who are a multi talented group of children. As you know our school motto is 'Every Child Shines' and that absolutely is the case with our Year 6 pupils.

They shine in music competitions, on sporting arenas, at art exhibitions and in DT days. They are accomplished historians and curious geographers, they lead play with younger children and make sure their EYFS buddies feel safe and secure in school. They are kind - which should never be underestimated - and helpful and becoming evermore responsible and independent as they move towards secondary schooling.

I cannot emphasise this enough, I am really proud of them as a group.

Next week they are about to showcase their talents in Maths, Reading, Spelling and Punctuation and Grammar tests, as part of their end of Key Stage 2 SATs tests. They have worked incredibly hard this year in preparation and I know that you will want to join me in wishing them well in these tests. They are looking forward to a special breakfast each day and playing games with their friends beforehand as well as having an exciting curriculum afterwards. It is our sincere hope that they will look back on this week fondly as another special time in school.

Good luck Year 6!



Need to contact the school?

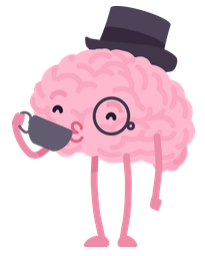
Tel: 01621 853519

Email: admin@allsaintsprimaryschoolmaldon.co.uk

Please keep reading for more important info and news...

SATs Week: 11th-14th May

- Keep Calm
- Eat Breakfast and
- Carry on!



"Challenges are what make life interesting and overcoming them is what makes life meaningful." - Joshua J. Marine

FREE BREAKFAST CLUB
FOR YEAR 6

A central illustration featuring a yellow toaster with two slices of toast popping out, a butter dish with a pat of butter and a knife, and a glass of orange juice with a red straw. The items are arranged in a semi-circle.

On each day of the tests (Mon to Thu), we are offering children a free 'Breakfast Club' which will take place from 8:00am in the School Hall. It will be an opportunity for the children to get together, enjoy breakfast snacks and squash, play games and relax with their friends to prepare them for the day ahead.

Children can access the school through the main front entrance each day no earlier than 8am. For details of SATs week see link to letter [here](#).

"Trust Yourself: you know more than you think you do"
Benjamin Spock

A polite reminder about PE kits in School

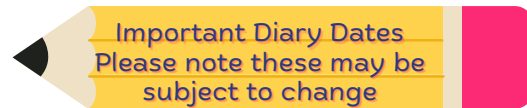
PE is part of the National Curriculum. Please ensure that your child has a full PE kit in school at all times as we do not have spare. Each child will need: a plain white T shirt, burgundy shorts and PE trainers. They may also still prefer to wear a tracksuit (or something similar that is warm and practical) for outdoor PE on colder days - we haven't quite got to the warmer summer days yet.

Please also remember that children wearing earrings on a PE day will be required to take them out before taking part. If they are not able to do this themselves, please do this at home the morning of their PE lesson. We are not permitted to help the children, even with your permission.

And please remember to label **EVERYTHING!**

Also, it is that time of year when the weather starts to change and days get warmer. Coats, cardigans and jumpers get discarded as the children get immersed in their important games and activities. Please do label all of your child's belongings. The lost property section is still the fastest growing area of the school!

Our main goal is always to reunite items with their rightful owners, but without names it can be almost impossible. You don't have to buy expensive labels, using a permanent marker should be enough to make belongings are returned.



MAY 2026

- 11-15 - SATS week Year 6
- 12 - ACL Course, Sibling Rivalry
- 19 - ACL Course, Managing the Parentload
- 22 - Party and School Disco 5.00-6.15 and 7.00-9.00pm
- 25 - Bank Holiday
- 26-29 School Holidays

JUNE 2026

- 1 - Children return to school
- 2 - Class photos in school
- 2 - Open Afternoon, Enrichment Homework on display in hall
- 3 - EYFS Trip to Boydells Farm
- 6 - ACL Course, Routines Rule
- 8 - 12 Year 6 Hilltop Residential Trip
- 9 - EYFS New Parent Meeting
- 16 - ACL Course, crafting for adults
- 16 - Athletic Field Events at Great Totham KS2
- 23 - ACL Course, Start well at secondary school
- 26 - Summer Fete 3.15-6.00pm
- 29 June-3 July - Sports week in school, details to be confirmed
- 30 - ACL Course, Managing the Parentload

JULY 2026

- 1 - School Sports Day
- 2 - Summer Music Concert in School Hall (details to follow)
- 3 - Kwik Cricket at Drapers tbc
- 7 - Reserve date for School Sports Day (in case of bad weather)
- 7 - ACL Course, Start well at Primary School

Continued on next page...

Important Diary Dates
Please note these may be
subject to change

Week commencing Monday 11th May we will be on WEEK 1 of our rolling 3 week dinner menu - Please check our website for allergens ([link here](#)).

Week 1	Monday	Tuesday	Wednesday	Thursday	Friday
Main	Jacket Potatoes with a choice of Toppings Cheese, Tuna or Beans	Pork Sausage with Mash Potato Gravy optional	Roast Chicken, Yorkshire Pudding and Roast Potatoes with Gravy and Stuffing optional	Beef Burger with Potato Wedges BBQ Sauce optional	Fish and Chips Ketchup optional
Vegetarian	Jacket Potatoes with a choice of Toppings Cheese, Tuna or Beans VF	Vegetable Sausage with Mash Potato Gravy optional VF	Quorn Fillet Yorkshire Pudding & Roast Potatoes with Gravy and Stuffing optional VF	Vegetable Burger in a Roll with Potato Wedges BBQ Sauce optional	Vegetable Fingers and Chips Ketchup optional VF
Vegetables	Olives	Sweetcorn	Seasonal Veg	Coleslaw	Beans and Peas
Alternative	Bread Roll filled with Ham, Cheese or Egg Mayo	Hot Pasta with Tomato Sauce Toppings of the Day VF	Hot Roast Roll	Hot Pasta with Tomato Sauce Toppings of the Day VF	Bread roll filled with Ham, Cheese or Egg
Salad Bar	Grated Carrot, Sweetcorn, Tomatoes and Cucumber				
Desserts	Yoghurt Bar with a Selection of Toppings				
	Fruit Platter	Ice Lolly	Sponge Cake	Jelly & Cream	Angel Delight

JULY 2026

- 8 - Leavers Production at 9.30am and 7pm (ticketed event, details to follow)
- 10 - Leavers BBQ at school
- 15 - ACL Course, Summer Sanity
- 15 - Whole School Year 6 Leavers Assembly at All Saints Church
- 17 - Year 6 Leavers Assembly in School, parents & carers invited
- 20 - Non-pupil day
- 21 - 30 Aug School Holidays

AUG 2026

- 31 - Bank Holiday

SEP 2026

- 1 - Non-pupil day
- 2 - Children return to school
- 22 - Individual and sibling photos

OCT 2026

- 9 Girls Tag Rugby at Drapers Farm (Y3,4,5,6 details tbc)
- 20 - Parents Evening (details tbc)
- 22 - Parents Evening (details tbc)
- 26-30 - School Holidays

Nov 2026

- 2 - Children return to school
- 3 - Open afternoon and Enrichment Homework in school hall

Dec 2026

- 18 - Whole School Christmas Service at All Saints' Church
- 21-31 - School Holidays

Jan 2027

- 1 - Bank Holiday
- 4 - non-pupil day
- 5 - Children return to school

easyfundraising

Feel good when you shop

Turn cashback from online shopping into free donations

Sign up today

JOHN LEWIS, ebay, Booking.com, TESCO, Argos, Etsy, M&S, Pets

over 8,000+ other retailers

SAT 30 MAY: 6pm - 9pm

AT COLCHESTER ZOOLOGICAL SOCIETY

Charity no. 1105621

A fun festival exclusively for children & young people with SEND & their families

DISCOVER OVER 150 SPECIES FROM AROUND THE WORLD SET IN OVER 60 ACRES OF PARKLAND AND LAKES - ANIMAL ENCOUNTERS - DINOSAUR REALM - OUTDOOR PLAY AREAS - LOST MADAGASCAR ROAD TRAIN - DISCOVERY DEN - SAND PLAY FACE PAINTING - ANIMAL GUYZ

TICKETS: FROM JUST £10 PER PERSON + booking fee

<https://SENDFESTZoo.eventbrite.co.uk>

BOOK ONLINE



POLITE REMINDERS - Thank you

PLEASE NOTE:

Whilst we ask for a payment towards school trips (with the exception of Hilltop) as a voluntary contribution, if not enough money is received for a trip it will have to be cancelled.

Permission for your child to be taken on a trip and paying monies outstanding can both be made via the School Gateway App. You can also pay by cash directly to the school office (exact money only please as the school does not have change). If you have any questions or require further help, please contact the school office directly (either in person, by phone or on email).

EYFS PAYMENTS NOW DUE



Boydells Farm Visit: Wednesday 3rd June 2026

£15.50 Now Due

Please note, if you would like the school to provide your child with a packed lunch please complete the form attached to the letter ([link here](#)) by the 22nd May 2026

LKS2 PAYMENTS NOW DUE



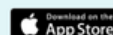
Marine Biology Lesson on Sharks in school.

19 June, 2026

£2.00 Now Due

How to activate your account

1. Download the Android or iPhone app.



2. Press 'Sign Up' then enter the email and mobile number your school has on record. If you're not sure if they have the right details, it's best to check and update first.

3. Press 'Send PIN'. You will receive a text message with your unique PIN.

4. You're now ready to log in and start using School Gateway.

5. If you don't have a smartphone or prefer to use a computer, you can set up your account using the [web version](#) of School Gateway.

How to log in

1. Once you have your PIN, go ahead and launch the School Gateway app on your smartphone or tablet.

2. Enter the email you have registered with your school and the PIN you received. If you didn't get a PIN, it is likely because your school doesn't have the right contact info. Get in touch with them to check.

3. If both the email and PIN are entered correctly, hit 'Login' and you're ready to start engaging with your school.

4. You can also access School Gateway [on the web](#)

Schoolgateway



UKS2 PAYMENTS NOW DUE/OVERDUE



Hilltop Year 6 Residential Trip

June 8-12, 2026

A TOTAL OF £529 SHOULD NOW HAVE BEEN PAID

Year 5 Experience Week

June 8-12, 2026

A TOTAL OF £35 IS NOW DUE



£6

YFS / KS1 / MEERKATS

SUMMER PARTY, 22ND MAY 26

5.00-6.15PM

£6

NOTE: YOU MUST PRE-BOOK, WE ARE UNABLE TO ACCEPT WALK-INS ON THE NIGHT DUE TO HEALTH AND SAFETY REGULATIONS

Payments £6:

ONLINE (preferred) via the All Saints' PTA Bank Account:
Sort Code 20-54-30/Account Number 60106569

CASH: PTA box (in a named envelope) with the attached permission slip.

Consent:

For online payments: please use your **your child's initials** and the word "party" as a reference, this will automatically indicate consent for your child to attend. If you pay by cash you must give consent by email to admin@allsaintsprimaryschoolmaldon.co.uk or with the attached permission slip. **Payments must be made no later than Wednesday 20th May.**

On the Night: NO WALK-INS ALLOWED - There will be no access to school before 5pm.

Children's names will be on a list on the door at the main school front entrance. Children must be collected at the end of the party promptly by an **adult from Lions classroom at 6.15pm**

Please **do not send your child with money or valuables**. Included in the cost of the ticket each child will be provided with: a raffle ticket, a drink, a small bag of sweets and a packet of crisps.

All Queries and dietary requirements should be emailed ahead by the 20th May to: asmaldonpta@gmail.com

PERMISSION SLIP FOR CASH PAYMENTS (EXACT MONEY ONLY):

Child's name:Class:.....



KS2 DISCO 22ND MAY 26



LKS2: 7.00-8.30PM UKS2: 7.00-9.00PM

**NOTE: YOU MUST PRE-BOOK, WE ARE UNABLE
TO ACCEPT WALK-INS ON THE NIGHT DUE TO
HEALTH AND SAFETY REGULATIONS**

Payments £5:

ONLINE (preferred) via the All Saints' PTA Bank Account:

Sort Code 20-54-30/Account Number 60106569

CASH: PTA box (in a named enveloped) with the attached permission slip.

Consent:

*For online payments: please use your **your child's initials** and the word "disco" as a reference, this will automatically indicate consent for your child to attend. If you pay by cash you must give consent by email to admin@allsaintsprimaryschoolmaldon.co.uk or with the attached permission slip. **Payments must be made no later than Wednesday 20th May.***

On the Night: NO WALK-INS ALLOWED - There will be no access to school before 7.00pm.

Children's names will be on a list on the door at the main school front entrance. Children must be collected at the end of the Disco promptly by an **adult from Lions classroom at 8.30pm FOR LKS2 OR 9.00pm FOR UKS2.**

Please ask children to leave mobile phones and valuables at home.

Children are welcome to bring a small amount of change to purchase drinks, sweets temporary tattoos, for nail painting and raffle tickets etc.

PERMISSION SLIP FOR CASH PAYMENTS (EXACT MONEY ONLY):

Child's name:Class:.....



COMMUNITY FOUNDATION



SCAN ME TO BOOK



HAVE A DISCOUNT ON US!

USE CODES:
MAYHALFTERM10
EXPIRES: 08/05/26
SUMMERHOLIDAYS10
EXPIRES: 30/06/26

HOLIDAY ACTIVITIES

MAY & SUMMER 2026

CAMP WRAP AROUND CARE
Available at Sherb End
8.30am-9.30am & 4.30pm-5.30pm
before and after camp



FOR CHILDREN IN SCHOOL YEARS 1-6
A FUN, ENRICHING & VARIED CHILDCARE OFFER

SPORTS & GAMES
ARTS & CRAFTS
CHILL ZONE

TO INSPIRE, ENRICH AND UNITE OUR COMMUNITIES
Registered Charity Number: 1159381

www.cu-fc.com/cuf
cuf@colchesterunited.net
01206 755160
@ColU_CF /ColUCF
#enrichourcommunities

ANNUAL SUMMER CAMP
THE BIGGEST FOOTBALL CAMP OF THE YEAR!

VENUE	DATES	TIME	SCHOOLS	GROUPS	WORKSET
Sherb End	18, 19, 20 August	9:00-15:00	1-11	Outfields, Tan-Like A Pro	£25

*INCLUDES A FREE SHIRT AND BALL!

VENUE	DATES	TIME	ADDRES	SCHOOL YEAR	GROUPS	PRICE PER DAY	PRICE PER WEEK
-------	-------	------	--------	-------------	--------	---------------	----------------

MAY FOOTBALL CAMPS

Sherb End	26, 27, 28, 29 May	9:00-15:00	8:00-9:00A, 10:00-11:30A	1-11	Outfields, Tan-Like A Pro	£25	£100
Clacton	26, 27, 28, 29 May	9:00-15:00	8:30-9:30	1-6	Outfields	£20	£80
Stadium	26, 29 May	9:00-15:00	8:30-9:30	1-6	Outfields	£20	£80
Malden	26, 27, 28, 29 May	9:00-15:00	8:30-9:30	1-6	Outfields	£20	£80

SUMMER FOOTBALL CAMPS

Sherb End	21, 22, 23, 24 Jun	9:00-15:00	8:00-9:00A, 10:00-11:30A	1-11	Outfields, Tan-Like A Pro	£25	£100
Sherb End	22, 26, 29, 30, 31 Jul	9:00-15:00	8:00-9:00A, 10:00-11:30A	1-11	Outfields, Tan-Like A Pro	£25	£100
Sherb End	3, 4, 5, 6, 7 Aug	9:00-15:00	8:00-9:00A, 10:00-11:30A	1-11	Outfields, Tan-Like A Pro	£25	£100
Sherb End	10, 11, 12, 13, 14 Aug	9:00-15:00	8:00-9:00A, 10:00-11:30A	1-11	Outfields, Tan-Like A Pro	£25	£100
Sherb End	24, 25, 26, 27 Aug	9:00-15:00	8:00-9:00A, 10:00-11:30A	1-11	Outfields, Tan-Like A Pro	£25	£100
Clacton	21, 22, 23, 24 Jun	9:00-15:00	8:30-9:30	1-6	Outfields	£20	£80
Clacton	28, 29, 30, 31 Jul	9:00-15:00	8:30-9:30	1-6	Outfields	£20	£80
Clacton	4, 5, 6, 7 Aug	9:00-15:00	8:30-9:30	1-6	Outfields	£20	£80
Clacton	11, 12, 13, 14 Aug	9:00-15:00	8:30-9:30	1-6	Outfields	£20	£80
Stadium	22, 23, 24 Jun	9:00-15:00	8:30-9:30	1-6	Outfields	£20	£80
Stadium	19, 20, 21 Aug	9:00-15:00	8:30-9:30	1-6	Outfields	£20	£80
Stadium	26, 27, 28 Aug	9:00-15:00	8:30-9:30	1-6	Outfields	£20	£80
Malden	21, 22, 23, 24 Jun	9:00-15:00	8:30-9:30	1-6	Outfields	£20	£80
Malden	28, 29, 30, 31 Jul	9:00-15:00	8:30-9:30	1-6	Outfields	£20	£80
Malden	4, 5, 6, 7 Aug	9:00-15:00	8:30-9:30	1-6	Outfields	£20	£80
Malden	11, 12, 13, 14 Aug	9:00-15:00	8:30-9:30	1-6	Outfields	£20	£80
Col Academy	21, 22, 23, 24 Jun	9:00-13:00	N/A	1-6	Outfields	£10	£40
Col Academy	3, 4, 5, 6, 7 Aug	9:00-13:00	N/A	1-6	Outfields	£10	£40
Col Academy	10, 11, 12 Aug	9:00-13:00	N/A	1-6	Outfields	£10	£40
Col Academy	18, 20, 21 Aug	9:00-13:00	N/A	1-6	Outfields	£10	£40

EARLY DROP-OFF

Early Drop-off available at **Clacton Stadium** or **Malden**. Option at point of booking for early drop-off from 8:30am-9:30am.

WRAP AROUND CARE

Wrap around care available at **Sherb End**. Option at point of booking for wrap around care from 8:30am-9:30am and 4:30pm-5:30pm.

VENUES

Sherb End: Sherb End Community & Sports Centre, CO2 9BG
Stadium: Colchester Community Stadium, CO4 5UP
Clacton: St Clare's Primary School, CO16 8AG
Malden: Mission All Saints Primary School, CM9 6HF
Col Academy: Colchester Academy School, CO4 3LL



SCAN ME TO BOOK

£
Prices from as little as £2.50 per hour



TO INSPIRE, ENRICH AND UNITE OUR COMMUNITIES
Registered Charity Number: 1159381

www.cu-fc.com/cuf
cuf@colchesterunited.net
01206 755160
@ColU_CF /ColUCF
#enrichourcommunities

essex outdoors



AMAZING ADVENTURES ON YOUR DOORSTEP

Exhilarating school holiday activity days for kids age 8+

Water sports, high ropes, zip wire, archery, bushcraft and more at four centres.

BRADWELL • DANBURY • HARLOW • MERSEA

£40 PER DAY

Essex County Council essexoutdoors.com/school-holiday-activities



About Boys Course 5-11

Discover what makes boys tick. This 4 session, insightful course helps Mothers of Boys aged 5-11 yrs understand their sons' emotional, social, and developmental needs, and how to support them with confidence and care.

Date: 17/06/2026 to 08/07/2026

Time: 19:00 - 21:00

Venue: Dengie Family Hub, CM0 8QB

Scan the QR code, or Visit our website aclessex.com and type 'Dengie' or 'HO3C75GO25' in the 'Find a course...' box

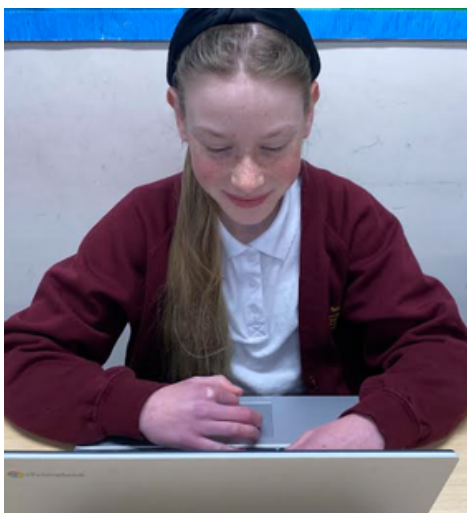


aclessex.com
0345 603

Copied to clipboard.

Essex County Council

Thank you to our Sponsors:



Staycations Maldon

<http://staycationsmaldon.co.uk>

Situated in the heart of Maldon, Essex, our five luxurious, executive one, two and three bedroom apartments are the perfect place to stay while you are enjoying a trip to one of the oldest towns in England. The apartments are within the very characteristic 16th century Grade II listed Kings Head Centre, on the main High Street.



The Courtyard Clinic

Osteopathy & Physiotherapy
Podiatry & Chiroprody
Massage Therapy

The Courtyard Clinic

<https://osteopathmaldon.co.uk/>

Our practitioners are registered and independent bodies. They undergo continuous training in order to maintain high standards and stay at the forefront of their professions.

We strive for a holistic, patient-centred approach to help with the needs of every patient as an individual to manage a range of acute and chronic conditions.

Osteopathy, Massage & Podiatry Maldon
The Courtyard Clinic in Maldon, Essex, provides professional Osteopathy, Sports Massage, and Podiatry.
The Courtyard Clinic - Mar 4

